

*

.2002

1993

26

1993

2002

risk analysis

.(2001)

accrual

profitability

analysis

basis

*

2003/7/14

.2004/4/1

accounting

measures

stock returns

(Wallace *et al.*, 1999)

accounting-based earnings

significant

%10

(Lev, 1989)

.takeholders.

:

-1

-2

-3

-4

-5

()

:

-1

-2

1970

| | |
|--|----|
| American Stock Exchange Commission (SEC) | -3 |
| listed | |
| companies | -4 |
| (SFAS95, 1987) 95 | -5 |
| International | |
| 1977 | |
| Accounting Standards Committee (IASC) | |
| (7) | |

(Sharma and Iselin, 2001)

professional bodies

(2001)

(Almisher (Penman, 1996)

.and Kish, 2000)

1998

financial performance

.()

cash flow

statement

balance sheet

income statement

.(Henderson and Peirson, 2000: 573)

1963 AICPA

.(Mosich and

Larsen, 1983: 933)

current and potential

(Courtis, 1978)

.shareholders

(Epstein and

.(Dunk, 1995)

Anderson, 1994)

(Nurnberg and Largay, 1999)

investing

operating activities

financing activities

activities

(Bernard, 1993)

(Revell, 2001)

(Almisher and Kish, 2000)

(Footnotes)

(2000)

(Ali and Pope, 1995)

.(Clubb, 1995)

(1998)

.(Clubb, 1995; Vafeas *et al.*, 1998)

.(Charitou and Clubb, 1999)

(1998)

-1993

(1994-1985)

2002

database

(adjusted R²)

(2001)

1998 1993

.1993

2002

:

.2002

1993

•

•

•

1997-1970

%18

130

) 1995

%22.3

1960

%3.6

.(2000

(Ali and

Pope, 1995)

%42

2001-1996

$$\overline{SMV}_{ijt} = b_{1it} + b_{2it}CFOE_{it} + e_{it}$$

Share Market Value

$:\overline{SMV}_{ijt}$

.t i j

Cash Flow

$:CFOE_{it}$

.t i to the Owner Equity

$:e_{it}$

$:b_{it}$

2002

1993

$:(\overline{SMV})$

-1

1997 (22)

)
:(2003

$$SMV_{ijt} = \frac{\sum_{j=1}^n P_{ij}}{n}$$

$$\overline{SMV}_{ijt} = b_{1it} + b_{2it}AROE_{it} + e_{it}$$

i j

$:SMV_{ijt}$

Share Market Value

$:\overline{SMV}_{ijt}$

.t i j

.t

$:AROE_{it}$

3:n

i

Accounting Return to the Owner Equity

.j i

$:P_{ij}$

.t

$:j$

$:e_{it}$

$:b_{it}$

.t

1998 : (AROE) -2

Barth *et al.* (2001)

$$OCF_{it} = \gamma_0 + \gamma_1 E_{it} + \gamma_2 AP_{it} + \gamma_3 INV_{it} + \gamma_4 AR_{it} + \gamma_5 DEP_{it} + \gamma_6 OTHER_{it}$$

$$AROE_{it} = \frac{\sum_{t=1}^{t=n} (AR_{it} / OE_{it}) \times 100\%}{n}$$

: OCF_{it}
 : E_{it}
 .t i
 i : AP_{it} : $AROE_{it}$
 .t
 () : INV_{it} .t i : AR_{it}
 .t i : AR_{it} .t i : OE_{it}
 .t
 i : DEP_{it} : (CFOE) -3
 .t
 : : $OTHER_{it}$

$$OTHER = E - (OCF + \Delta AR + \Delta INV - \Delta AP - DEP)$$

$$CFOE_{it} = \frac{\sum_{t=1}^{t=n} (CF_{it} / OE_{it}) \times 100\%}{n}$$

:
 : H_{01}
 : H_{02} :
 : H_{03} .t i : $CFOE_{it}$
 .t i : CF_{it}
 .t i : OE_{it}

SPSS

1993

0.02 Sig. F

Regression analysis

.()

:
:H₀₂

pooled

R² (2)

.regression

heteroscedasticity

0.313

0.313 (CFOE)

White's " "

Heteroscedasticity Test

residuals R²

Chi-Square " "
%10 %5 %1

: (2)

$$\overline{SMV}_{ijt} = 2.2006 + 0.2187 CFOE_{it}$$

0.002

(1)

0.05

0.01

:
:H₀₁

:
:H₀₃

(1)

Pooled regression

0.202

R²

(3)

0.202

(AROE)

(1)

(3)

$$\overline{SMV}_{ijt} = 2.1792 + 0.4128 AROE_{it}$$

$$\overline{SMV}_{ijt} = 2.313 + 0.165 AROE_{it} + .465 CFOE_{it}$$

(0.05)

(0.005)

Coefficients
0.023

(3)

(4)

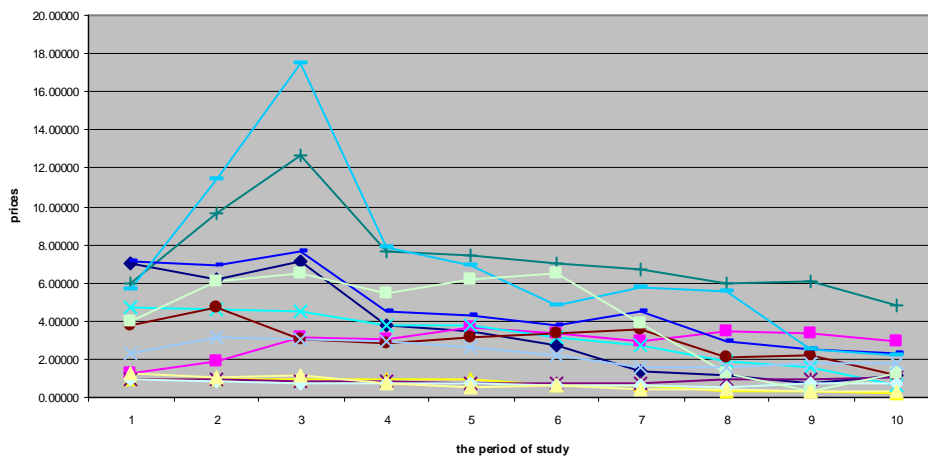
0.56

. 0.45

.1998

(1)

. (1993-2002)



(1)

| Regression Statistics | | | | |
|------------------------------|--|---------------------|----------|----------------|
| <i>Multiple R</i> | | 0.44963 | | |
| <i>R square</i> | | 0.20217 | | |
| <i>Observations</i> | | 26 | | |
| ANOVA | | df | F | Sig.F |
| <i>Regression</i> | | 1 | 6.0816 | 0.021 |
| <i>Residual</i> | | 24 | | |
| <i>Total</i> | | 25 | | |
| | | Coefficients | T | P-value |
| <i>Intercept</i> | | 2.179273 | 9.51327 | 0.000 |
| AROE | | 0.412845 | 2.46610 | 0.0211 |

(2)

| Regression Statistics | | | | |
|------------------------------|--------|---------------------|----------|----------------|
| <i>Multiple R</i> | 0.5600 | | | |
| <i>R square</i> | 0.3136 | | | |
| <i>Observations</i> | 26 | | | |
| ANOVA | | df | F | Sig.F |
| <i>Regression</i> | | 1 | 10.965 | 0.0029 |
| <i>Residual</i> | | 24 | | |
| <i>Total</i> | | 25 | | |
| | | Coefficients | T | P-value |
| <i>Intercept</i> | | 2.2006 | 10.83473 | 0.000 |
| CFOE | | 0.2187 | 3.311408 | 0.0029 |

(3)

| Regression Statistics | | | |
|------------------------------|---------------------|----------|----------------|
| <i>Multiple R</i> | 0.604 | | |
| <i>R square</i> | 0.365 | | |
| <i>Observations</i> | 26 | | |
| <i>ANOVA</i> | df | F | Sig.F |
| <i>Regression</i> | 1 | 6.617 | 0.005 |
| <i>Residual</i> | 24 | | |
| <i>Total</i> | 25 | | |
| | Coefficients | T | P-value |
| <i>Intercept</i> | 2.313 | 10.715 | 0.000 |
| <i>AROE</i> | 0.165 | 1.368 | 0.050 |
| <i>CFOE</i> | 0.465 | 2.431 | 0.023 |

(4)

CFOE AROE SMV

| SMV | AROE | CFOE |
|----------------------------|---------------|----------------|
| Pearson correlation | 0.450* | 0.560** |
| Sig. (2 – tailed) | 0.021 | 0.003 |
| N | 26 | 26 |

* Correlation is significant at the 0.05 level.

** Correlation is significant at the 0.01 level .

.2 27
2001

28 1998

.2

2000 .53

4 16 2001

.113 -97 .1 28

2003 1998

:

.91-69 1 17 .25 1
1999 2000

:

- Epstein, M. and Anderson, R. 1994. The Usefulness of an Annual Report to Corporate Shareholders in the United States of America and Australia, *British Accounting Association Conference at King Alfred's College, Winchester*, 23-25: 1-24. .21 77
- Henderson, S. and Peirson, G. 2000. *Issues in Financial Accounting*, Ninth Edition, Longman, Australia. .1997 (22) 2000
- Lev, B. 1989. On the Usefulness of Earnings and Earning Research: Lessons and Directions from Two Decades of Empirical Research, *Journal of Accounting Research*, 27. .55 39
- Mosich, A. and Larsen, E. 1983. *Intermediate Accounting*, McGraw-Hill Book Company, New York, USA.
- Nurnberg, H. and Largay, J. 1999. More Concerns Over Cash Flow Reporting Under FASB Statement No.95, *Accounting Horizons*, 10 (4).
- Penman, S. 1996. The Articulation of Price-Earnings Ratios and Market-To-Book Ratios and the Evaluations of Growth. *Journal of Accounting Reserch*.
- Revell, J. 2001. Annual Reports Decoded, *Fortune*, 143 (14).
- SFAS95. *Statement of Financial Accoutning Standards*, (95).
- Sharma, D., and Iselin, E. 2001. *The Decision Usefulness of Reported Cash Flow and Accrual Information in a Behavioral Field Experiment*. Social Science Research Network Electronic Library.
- Vafeas, N., Trrigeorgis, L., and Georgion, X. 1998. The Usefulness of Earnings in Explaining Stock Returns in an Emerging Market. The Case of Cyprus, *The Europeans Accounting Review*, 7: 105-124.
- Wallace, R. Choudhury, M. and Adhikari, A. 1999. The Comprehensiveness of Cash Flow Reporting in the United Kingdom: Some Characteristics and Firm-specific Determinants. *The International Journal of Accounting*, 34 (3).
- Ali, A. and Pope, F. 1995. The Incremental Information Content of Earnings, Funds Flow and Cash Flow, the UK Evidence. *Journal of Business, Finance and Accounting*, 22:19-34.
- Almisher, M. and Kish, R. 2000. Accounting Betas- An Ex Anti Proxy for Risk within the IPO Market. *Journal of Financial and Strategic Decisions*, 13 (3).
- Barth, M.E., Cram, D.P. and Nelson, K.K. 2001. Accruals and the Prediction of Future Cash Flows, *The Accounting Review*, 76 (1): 27-58.
- Bernard, L. 1993. *Accounting- Based Valuation Methods, Determination of Market- To-Book Ratios and Implications for Financial Statements Analysis*. University of Michigan.
- Brigham, E. and Gopenski, L. 1997. *Financial Management Theory and Practice*, the Dryden Press, N.Y.
- Charitou, A., and Clubb, C. 1999. Earnings, Cash Flows and Security Returns over Long Return Intervals: Analysis and UK Evidence. *Journal of Business, Finance and Accounting*, 26: 283-312.
- Clubb, C. 1995. An Emprical Study of the Information Content of Accounting Earnings, Fund Flows and Cash Flows in the UK. *Journal of Business, Finance and Accounting*, 22: 35-52.
- Courtis, J. 1978. Attitudes Towards Annual Reports. *Management Forum*. The University of New England Publishing Unit, 4 (4): 269-279.
- Dunk, W. 1995. Annual Reports Get Low Grade. *Upside*, 7 (1): 95-96.

The Relationship between Accrual-Based Values, Cash Based Values and Stock Prices

*Husam Al-Deen Al-Khadash and Mohammad Issa Al-Abbadi**

ABSTRACT

This study examines the significance of the rate of return to equity as a ratio of accrual basis and the cash flow to equity as a ratio of cash basis in analysing the financial performance of the industrial public shareholding companies in Jordan. The study also examines the association between the accounting rate of return to equity, the cash flow to equity and the influence on stock market prices. Through this objective, the study aimed at examining whether the accounting rate of return (based on the accrual basis) or the cash flow (based on the cash basis) has more impact on companies stock prices.

The examination covered a sample of 26 Jordanian industrial public shareholding companies that are listed on the Amman Stock Exchange Market for the period 1993-2002. The suggested models have been tested for all companies. This provides the chance to examine the structural behavior among the tested variables. The study concluded that there is a significant relationship between both tested models, and revealed that the cash flow to equity is more related to stock prices in comparison with accounting rate of return to equity.

* Faculty of Economics and Administrative Sciences, The Hashemite University, Zarqa, Jordan. Received on 14/7/2003 and Accepted for Publication on 1/4/2004.