

\*

:

:

.(Cox, 1967)

**.1**

.(Kotler, 1965)

Jean Dean

.(Blanc, 1988: 95)

:

(Afrol, 2003)

(Narimak

and Yuspen, 1976)

**.2**

(Tellis and Grawford, 1981)

(Bass,

1969)

2013

(M.T.A., 2001) 2010  
(2004 )

.2006/8/8

2005/8/28

\*

/

(voir; Helfer et

.Orsoni, 1981)

:

-1

.3

:

-

-

-

(Butler, 1980)

-2

:

(Haywood, 1986; 1991)

-1

(Baum, 1998)

-2

(Dong, Morais and

Dowler, 2003)

-3

.Ethnic

-4

(Lundtorp, 1995)

1994-1912

.1992-1991

1945-1940

.4

.1

(Kotler, 1997: 430)

Gauss

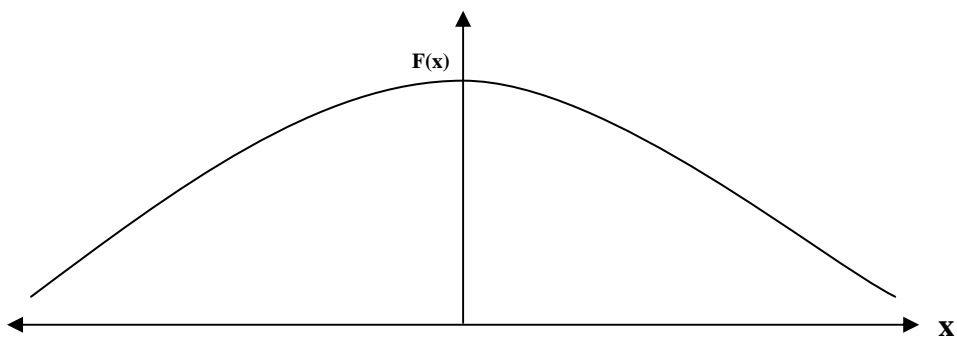
2005-1985

$$F(X) = \left[ \frac{1}{\sigma \sqrt{2\pi}} \right] \text{Exp}(-1/2(x - \mu) / \sigma)^2$$

2005-1995

.(1)

(1)



$$Y_t = Kt^\alpha \exp(-\beta t)$$

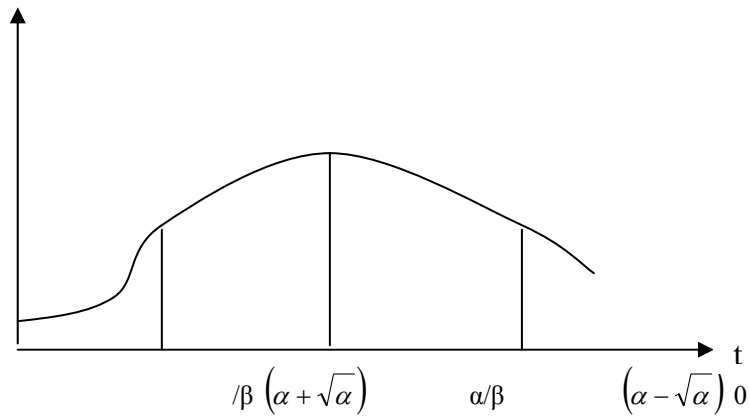
k t

(2)

:  $\infty+$   $\infty-$   
 $Y_t$  :  
 $\beta \alpha$

(Blanc, 1988: 96-97)

(2)



Butler

(Butler, 1980)

(3)

(See: Benedetto,

1993)

(Haywood, 1986)

(95 :2002 )

(11 :2002 )

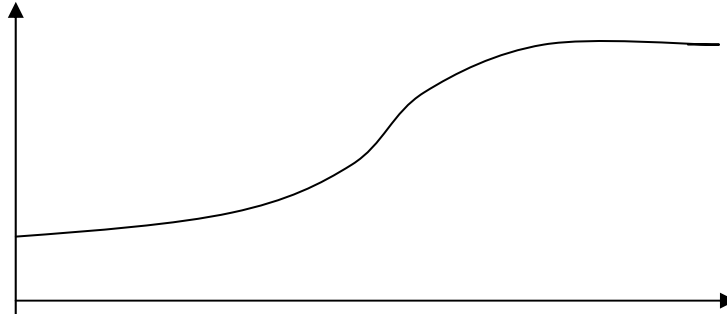
" 1997/9/27

(85 :2002 )

(Dong, Duarte and Dowler, 2004)  
 .(Baum, 1998)

.(Douglas, 1997; Debbage, 1990)

(3)



$$M_t = M / (1 + C \cdot \exp(-\lambda t)) \quad (1)$$

M C

M<sub>t</sub>

λ .t

D

.(Say, 1990)

$$dM_t = M_t \cdot \lambda \cdot [(M - M_t) / M] dt$$

M<sub>t</sub> < M :

D

Peter Drucker  
 Business

t = 0

.(Davies, 1985: 33)

:

M<sub>0</sub>

$$M_0 = M / (1 + C)$$

: C

.2

$$C = (M - M_0) / M_0$$

(1)

:

$$M_t = M / (1 + [(M - M_0) / M_0] \cdot \exp(-\lambda t)) \quad (2)$$

(2)

Logistical Function

.(Goncalves et al, 1997)

S

.(See: Lilien, 1987: 20)

t

M<sub>t</sub>

.t → +∞

M<sub>t</sub> → M

.D

D

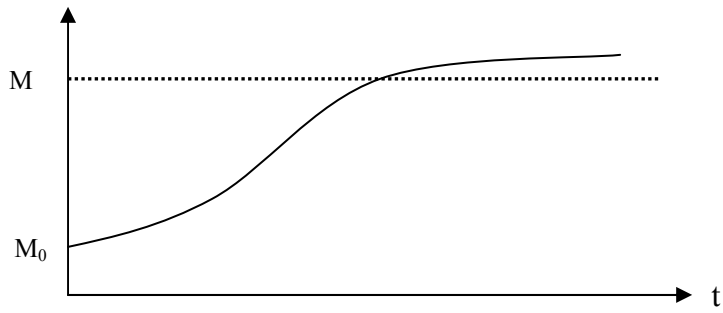
.(UNEP, 2001) Leakage Factor

(2)

.D

(4)

(4)



$$t = t_0 \quad V''_t = 0 \quad M_t \quad (4)$$

Point of Inflexion  $V'_t = q/2$   $t = t_0$   $D$

1975

$V_t$  80-78 1985  $( \quad M_t \quad )$

(See: Haywood,1991)

Ressort (1998)

$$\alpha \quad (3)$$

(Lundtorp, 1995)

$$V_t = \alpha + [q / (1 + \exp(-\lambda(t-t_0)))] \quad (4)$$

(See: Lilien and Kotler,

.1983; Lilien, 1987)

$$D \quad M_t$$

.1

$t$

$$V_t = q / [1 + \exp(-\lambda(t-t_0))] \quad (3)$$

.2005-1985

$$V'_t = dV_t/dt = q \lambda \exp[-\lambda(t-t_0)] / [1 + \exp[-\lambda(t-t_0)]]^2 = \lambda V_t (q - V_t)$$

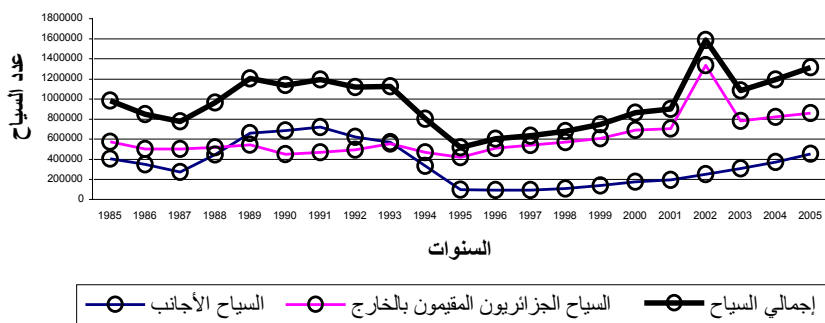
1985

.t

1985

$$V''_t = d^2V_t/dt^2 = q \lambda^2 \exp(-\lambda(t-t_0)) [2 - 1 - \exp(-\lambda(t-t_0))] / [1 + \exp(-\lambda(t-t_0))]^3 = \lambda V'_t (q - 2V_t)$$

(1) .2013  
(2)  
(5)



(5)  
2005-1985

(5)

(3) 2013 -1985

1987

(6)

(6)

(Série3)

1991

(Série1)

(Série2)

2007 2006 %10

.1995

2008 %11

2011 2010 %12 2009

) 2013 2012 %13 -

.(2004

:

)  
2004 2001

.(2001

. %4

%59

2010

%52

(M.T.S, 2005)

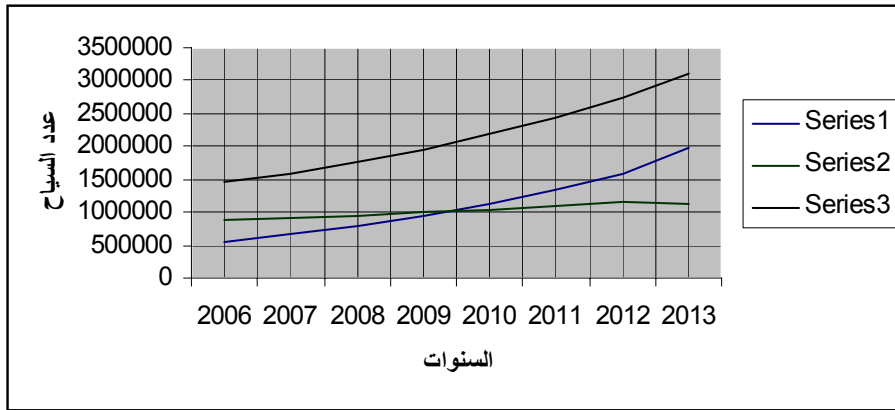
1.5

2.17

.(Rita, 2000) %3

(6)

.2013



.2

-1995

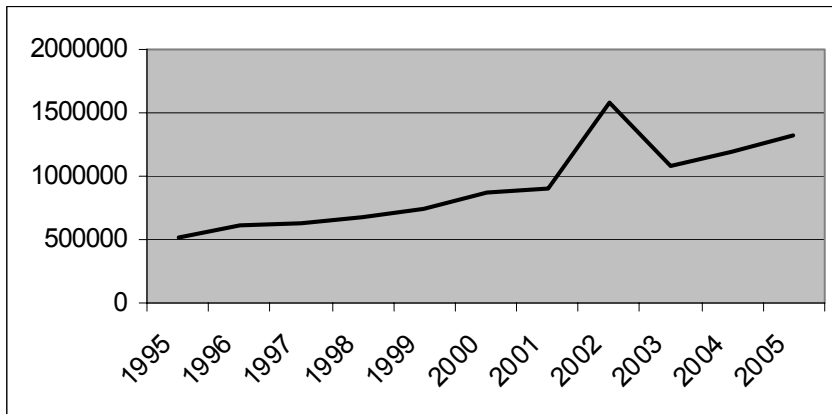
.2005

.(7)

1995

(7)

.2005 -1995





2002 (7)

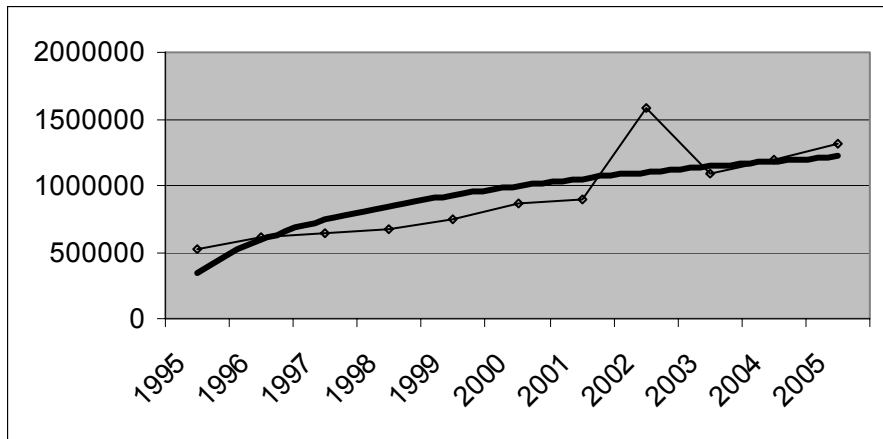
(7)

.Ressort

2002

(8)

(8)



(4)

$$V_t = 519576 + (960848) / [1 + \exp(-0.098(t-2000))]$$

(see :Baum, 1998)

$t=t_0=2000$

(8)

$v_t$

$\alpha$

$q/2$

1995 -1990

2015

(4)

.5

.1

(see: Bojanic, 1992; Lee and Norman, 1996)

2013 2010

.2

2015

2010

)

(2004

:

(2004 )

(2004 )

2010 -2005

:

(1)

**.1995-1985**

1995	1994	1993	1992	1991	1990	1989	1987	1987	1986	1985	
421928	468487	555552	495452	470528	451103	545706	520000	504723	501747	576674	
97648	336226	571993	624096	722682	685815	661159	446906	272705	347725	407392	
519576	804713	1127545	1119548	1193210	1136918	1206865	966906	777428	849472	984067	

*Source: CNES Contribution pour la redéfinition de la politique nationale du tourisme, Avant Projet De Rapport, Conseil National Économique et Social, (Alger: Novembre, 2000), PP.39-41.*

(2)

.2005 -1996

2005	2004	2003	2002	2001	2000	1999	1998	1997	1996
859067	821749	780469	1336915	705187	690446	607675	571234	539920	511477
456041	373804	306397	251145	196229	175538	140861	107214	94832	93491
1315108	1195553	1086866	1588060	901416	865984	748536	678448	634752	604968

Source: CNES. op.cit et ONS. Statistiques: tourisme 1996-2000, Office National Des Statistiques, <http://www.ons.dz/themstat.htm>.

(3)

.2013

2013	2012	2011	2010	2009	2008	2007	2006
1119048	1155991	1098955	1046759	998637	954021	912509	890321
1979483	1586045	1338434	1129481	953148	804344	678772	556370
3098531	2742036	2437389	2176240	1951785	1758365	1591281	1446691

:(2004 : ) 2013 -2004

.(2001 : ) 2010 :

(4)

.2015

2015	2014	2013	2012	2011	2010	2009	2008	2007	2006
1300800	1286047	1270408	1253882	1236479	1218216	1199122	1179238	1158613	1137311

.85-61 33 32

2004

1998

2002

2004

2013-2004

2002

1975

1985

Afrol News. 2003. Algeria Hopes to Reactive Tourism, Afrol NetWork Archives, Available at: [http://www.afrol.com/news2003/Alg002\\_tourism.htm](http://www.afrol.com/news2003/Alg002_tourism.htm).

2004

2004

Bass, Frank, M. 1969. A New Product Growth Model for

- Product Marketing Over the Life Cycle, *Management Science*, 12(4): 104-109.
- Kotler, Philip. 1997. *Marketing Management: Analysis, Planning, Implementation, and Control*, 9<sup>th</sup> Edition, New Jersey: Prentice-Hall Inc.
- Lee, Changuk Charles and Norman, William C. 1996. An Application of the Family Life Cycle To Understanding Tourism Behavior And Attitude, *The 1996 Leisure Research Symposium*, 23-27, Kansas City, MO.
- LiLien, Gary L. and Kotler, Philip. 1983. *Marketing Decision Making: A Model Building Approach*, New York: Harper and Row Editions
- Lilien, Gary, L. 1987. *Analyse des décisions marketing*, Paris: Editions Economica.
- Lundtorp, Svend. 1995. Testing A Model for Tourism Development: The Case of the Island of Bornholm, *Working Paper*, Danmark: Research Center of Bornholm.
- Ministère du Tourisme et de l'Artisanat. 2001. Éléments de la stratégie de développement durable du tourisme en Algérie: Horizon 2010, Alger: Janvier.
- Ministère du tourisme Sénégalien. 2005. Le tourisme au Sénégal, *Diawara Net*, Available At: [http://www.diawara.org/Senegal\\_Tourism.php](http://www.diawara.org/Senegal_Tourism.php).
- Narimak, Dhalla and Yuspen, Sonia. 1976. Forget the Product Life Cycle Concept, *Harvard Business Review*, 102-112.
- Rita, Paulo. 2000. Tourism in European Union, *International Journal of Contemporary Hospitality Management*, 12 (7): 434-436.
- Say, Jean-Baptiste. 1990. *Traité d'économie politique*, Alger: ENAG Editions.
- Tellis, Gerald, J. and Grawford, Merle. 1981. An Evolutionary Approach To Product Growth Theory, *Journal of Marketing*, 125-134.
- UNEP. 2001. Economic Impacts of Tourism, *UNEP Organization*, Last Updated: <http://www.unep.org/pc/tourism/sust-tourism/economics.htm>.
- WTO. 2002. Tourism Proves As Resilient and Stable Economic Sector New Release, *World Tourism Organization*, Madrid: 18.
- Consumer Durable, *Management Science*, 15, 215-247.
- Baum, Tom. 1998. Taking the Exit Route: Extending the Tourism Area Life Cycle Model, *Current Issues In Tourism*, 1(2): 167-175.
- Benedetto, C. Anthony and Bojanic, C. David. 1993. Tourism Area Life Cycle Extensions, *Annals of Tourism Research*, 20, 557-570.
- Blanc, François. 1988. *Marketing Industriel*, Paris, Librairie Vuibert.
- Bojanic, David, C. 1992. A Look at the Modernized Family Life Cycles and Overseas Travel, *Journal of Travel and Tourism Marketing*, 1(1): 61-79.
- Butler, Richard, W. 1980. The Concept of Tourism Area Cycle of Evolution: Implication For Resources, *Canadian Geographer*, 14(1): 5-12.
- CNES. 2000. Contribution pour la redéfinition de la politique nationale du tourisme, Avant Projet De Rapport, *Conseil national économique et social*, Alge.
- Cox, Jr William, E. 1967. Product Life Cycles as Marketing Models, *Journal of Business*, 375-384.
- Davies, Alain. 1985. *A First Course In Business Organization*, 10<sup>th</sup> Edition, Boston: George Allen and Unwin.
- Debbage, K. 1990. Oligopoly and the Resort Cycle in Bahamas, *Annals of Tourism Research*, 17, 513-527.
- Dong, Erwei, Morais, Duarte and Dowler, Lorrain. 2004. Ethnic Tourism Development in Yunnan, China: Revisiting Butler's Tourism Area Life Cycle, *Proceedings of the 2003 Northeastern Recreation Research Symposium*, GTR-NE-317, Newtown Square, PA: U S, 164-169.
- Douglas, Ngaire. 1997. Applying the Life Cycle Model to Melanesia, *Annals of Tourism Research*, 24, 1-22.
- Haywood, K. Michael. 1986. Can The Tourist Area Life Cycles Be Made Operational? *Tourism Management*, 7, 154-167.
- Haywood, K. Michael. 1991. Revisiting Resort Cycle, *Annals of Tourism Research*, 19 (2): 351-354.
- Helfer, Jean., Pet Orsoni, Jacques. 1981. *Marketing*, Paris: Vuibert éditions.
- Kotler, Philip. 1965. Competitive Strategies for New

---

...

---

## **The Life Cycle Model and It's Uses in the Tourism Field The Case of Algeria**

**Ammar A. Al-Arabi\***

### **ABSTRACT**

This work paper attempts to explain the life-cycle model, and its uses in the tourism field. It focuses on three axes. The first traits the life-cycle concept and its various formulas, among them, the tourism destination life-cycle model. The second takes on the determination of the appropriate formula of this model according to Algeria's case. The third is a set of conclusions and suggestions. Among the main results reached at this work, Butler's model is the more suitable model theoretically for describing the tourism destination evolution, but practically it differs according to the difference in characteristics, data and proprieties of any tourism's destination.

**Keywords:** Life Cycle Model, Tourism Field, Algeria's Case.

---

\* Faculty of Economic and Management Sciences, Batna University, Algeria. Received on 28/8/2005 and Accepted for Publication on 8/8/2006.